

*MagicPoint*TM

Ver 2.x

Driver's User Guide (Support Infrared)

Hwayoung RF Solution Inc.

152-050 514, Woolim e-BIZ Center, 170-5, Guro-
Dong, Guro-Gu, Seoul, KOREA

TEL : 02-2108-2855

FAX : 02-2108-2860

URL : www.hrfs.co.kr

Index

Chapter 1. Introduction of MagicPoint 2.x	3
Chapter 2. Installation and Execution	
System Requirements	5
Installation Process Type	5
Automatic Installation	6
Manual Installation	10
Un-installation	14
Execution	15
Chapter 3. Searching Information of Touch Screen	16
Chapter 4. Configuration Setting	
Mouse Event Mode	18
Right Button Setting	19
Fine Offset Setting	20
Double Click Setting	21
Rotation Setting	23
Calibration	24
Sound Setting	26
Chapter 5. Selecting Display Device	27
Chapter 6. Diagnosis of Optical Sensors	28
Appendix A) Frequently asked Questions	29

Chapter 1. Introduction of MagicPoint 2.x

Thanks for your purchase of MagicPoint Touch Screen and welcome to Hwayoung.

MagicPoint 2.x is consist of Infrared Touch Screen Driver including Configuration Utility, USB interface, Auto Calibration function, Self-Diagnostic function to check error of optic sensors and supporting dual monitor.

Simple and easy-to-follow menus and instructions make customers feel comfortable to install and use MagicPoint Touch Screen.

Chapter 2. Installation and Execution

System Requirements

Installation Process Type

Automatic Installation

Manual Installation

Un-Installation

Execution

System Requirements

- IBM PC Compatible
- Main Memory: Min 32 Mb
- Windows 2000, Windows XP, Windows9x or Windows NT4
(USB-version not support Windows9x and Windows NT4)
- Hard Disk Min. 6Mb



Reaction speed of touch screen is subject to change according to the specifications of computer.

R.E.F.

Installation Process Type

If your touch device is USB device, please follow the installation process type below.

Process Type 1: When you install the driver software, before you connect USB cable to PC, refer to **[Automatic Installation]** guide of following page.

Process Type 2: When you connect USB cable to PC, before you install the driver software, refer to **[Manual Installation]** guide of page 10.

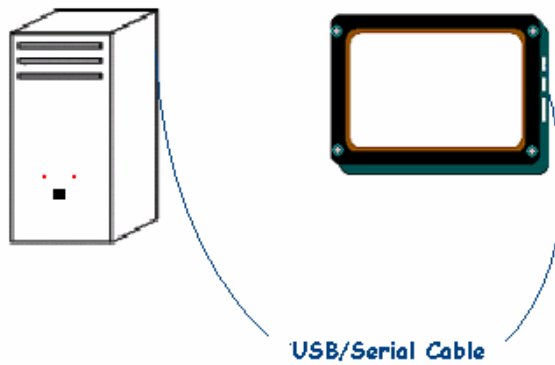
Serial touch device installation does not depend on this installation type, therefore you can do install by any type.

Automatic Installation

Firstly, Installing
Driver and Configuration Utility



And next, Connecting USB Cable to computer



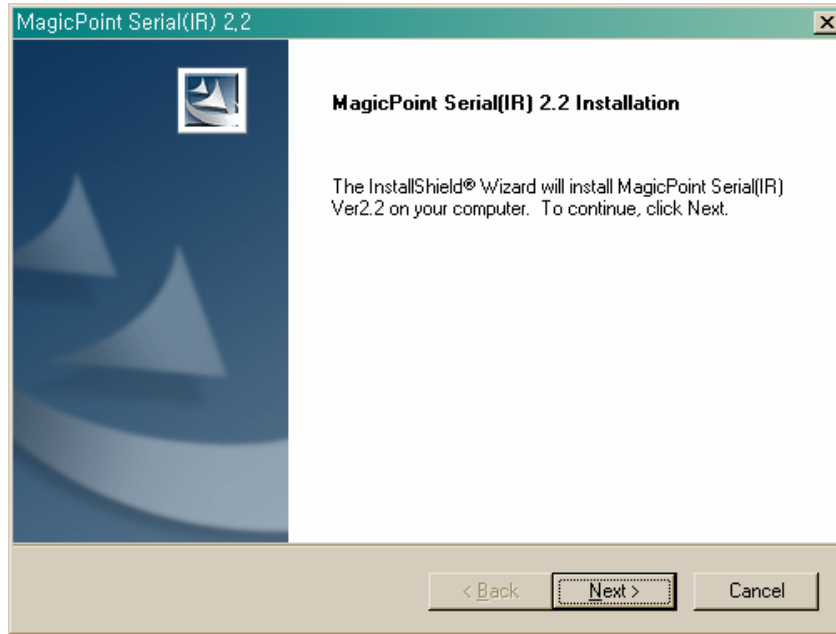
1. Installation File

Select and execute “**setup.exe**” among files in the Installation CD as bellows.



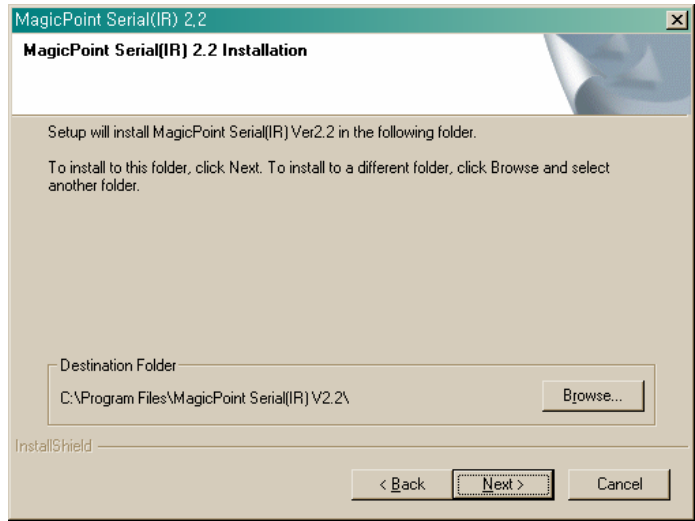
2. Installation Start

Click the **[Next]** button in the dialog box below.



3. Destination Folder Selection

After selecting your favorite “Destination Folder” by clicking **[Browse]** button, click the **[Next]** button in dialog box below.



If the message box “The folder does not exist. Should Setup create it for you” appear, click the “yes” button.

4. Installation Complete

Select the option **Yes, I want to restart my computer now** and click the **[Finish]** button to restart system. It is recommended that you restart computer right after completing installation.



5. Connecting Hardware

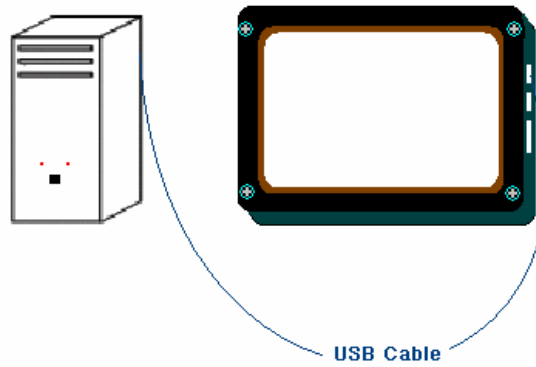
After restarting system is completed, connect USB Cable of Touch Screen Monitor to USB Port of the Computer.



Both Driver and Configuration Utility have been installed at the same time during automatic installation session and it's not necessary to install Driver separately.

Manual Installation

Firstly,
Connect USB Cable of Touch Monitor to the



And next,
Install Driver and Configuration Utility

The picture above is installation process type that you connect USB cable to PC before you install the driver software. After plug-in of USB cable, you can install driver by simply executing Setup.exe that is recommended. However, the following step shows how to install driver by manually appointing the driver information file folder.

1. Connecting Hardware

After connecting USB Cable of Touch Screen Monitor to USB Port of the Computer, **Hardware Wizard** dialog box is appeared with options as bellows.

Select the option “**Install from a list or specific location(Advanced)**” and click the [**Next**] button. (only in USB touch installation)

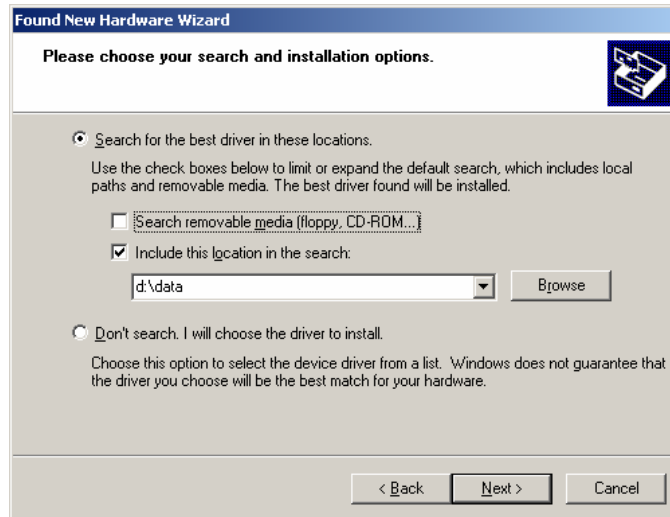


R.E.F.

If you want automatic Installation, click the [**Cancel**] button. (recommended)

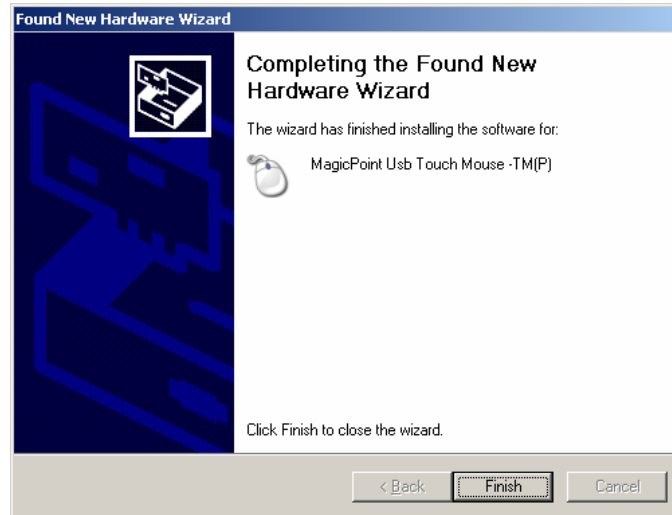
2. Selecting Driver folder

After selecting the option **Include this location in the search** and location of driver folder as “d:\data(CD-Rom Drive: D)”, please click the **[Next]** button in dialog box below.



3. Installation of Driver completed

Click the **[Finish]** button in bellow **Hardware Wizard** page to complete installation.

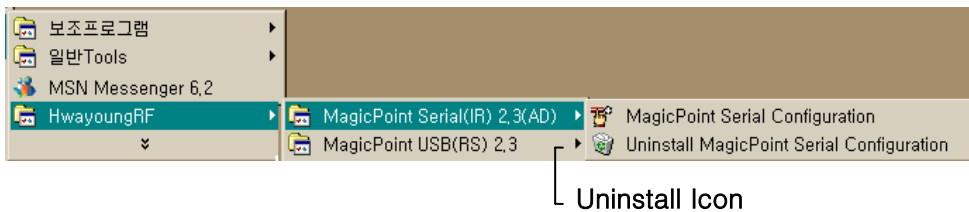


4. Installation of Configuration Utility

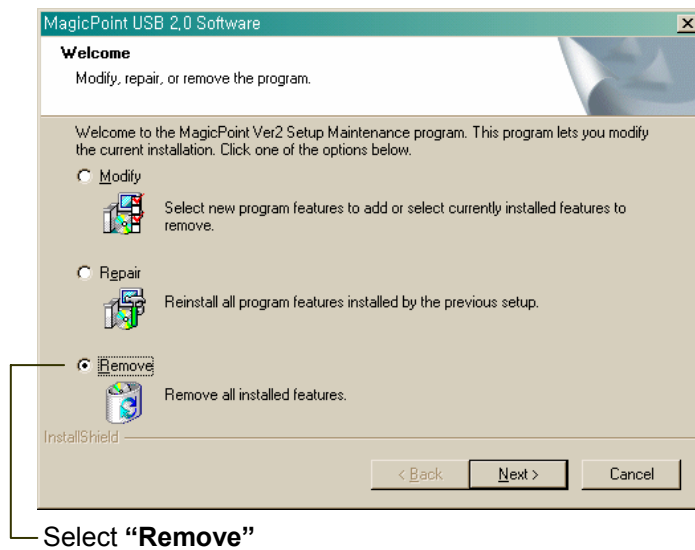
Select and execute “**Setup.exe**” among files in Install CD.
(Please refer to automatic Installation.)

Un-installation

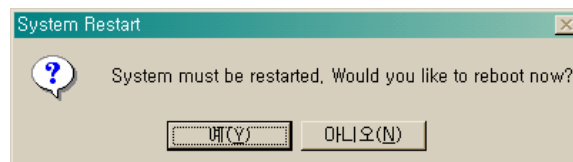
Firstly, selecting **Start >> Programs >> HwayoungRF >> MagicPoint USB(or Serial) 2.x** and click the icon of **Uninstall MagicPoint USB(or Serial) Configuration**



Select **“Remove”** and click the **[Next]** button in the dialog box below.

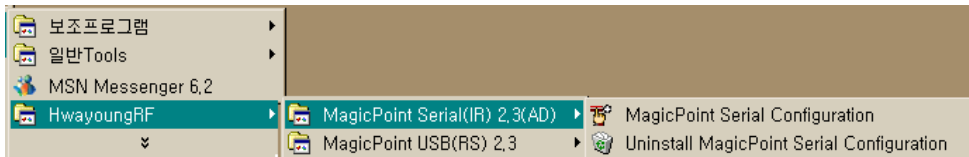


Click the **[Yes]** button to restart system for complete un-installation.

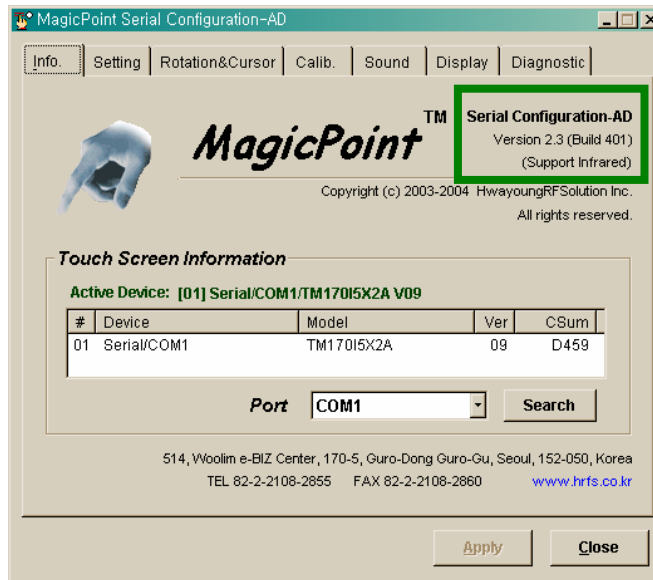


Execution

After installation, icon of **MagicPoint USB(or Serial) 2.x** appear on desktop.
 Click icon of **MagicPoint USB 2.x** or select **Start >> Programs >> HwayoungRF >> MagicPoint USB(or Serial)**, and click the icon of **MagicPoint USB Configuration** to start execution.



Chapter 3. Information of Touch Screen



Information of touch screen such as Version, Device ID, Model, Firmware Version and Checksum are available in dialog box below.

In case of failing to identify device, please click the **[Search]** button to search available device.



R.E.F.

If you fail to search device, please refer to item **Searching Touch Screen Monitor in information dialog box is not available** in appendix A) Q4.

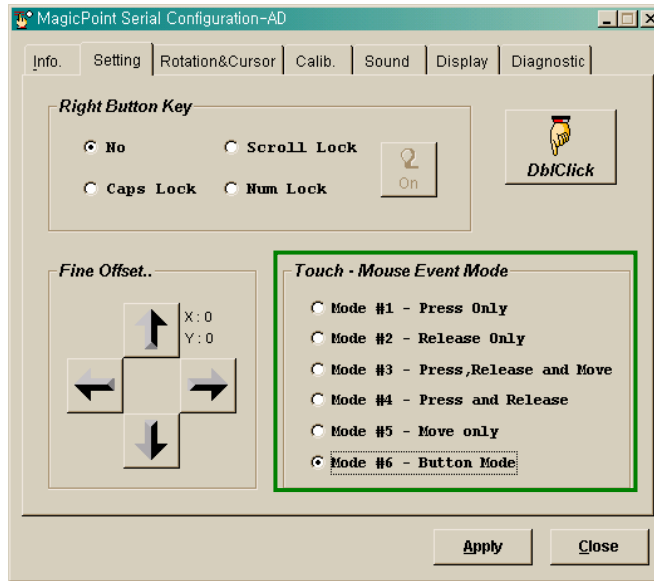
Chapter 4. Configuration Setting


- Mouse Event Mode**
- Double Click Setting**
- Right Button Setting**
- Fine Offset Setting**
- Rotation Setting**
- Calibration**
- Sound Setting**

Mouse Event Mode

Setting mouse event according to input action on Touch Screen by user

Mouse Event Mode of **Press, Release and Move** is recommended as default setting.

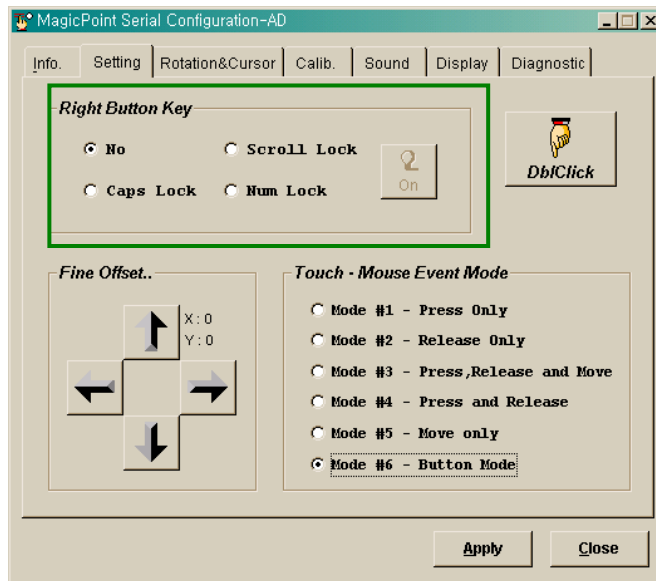


	Mouse Event	Input action on Touch Screen	Output from Touch Screen
 R.E.F	Press	Touch On	→ Mouse Button Down
	Release	Touch Off	→ Mouse Button Up
	Move	Touch On & Move	→ Mouse Drag
	Button	Touch On	→ Mouse Click

Right Button Setting

Matching input action on Touch Screen by user to the Event of Mouse Right Button can be available.

Caps Lock or **Scroll Lock** or **Num Lock** key can be selected.



Select one of the Right Button Keys and click the **[Apply]** button.

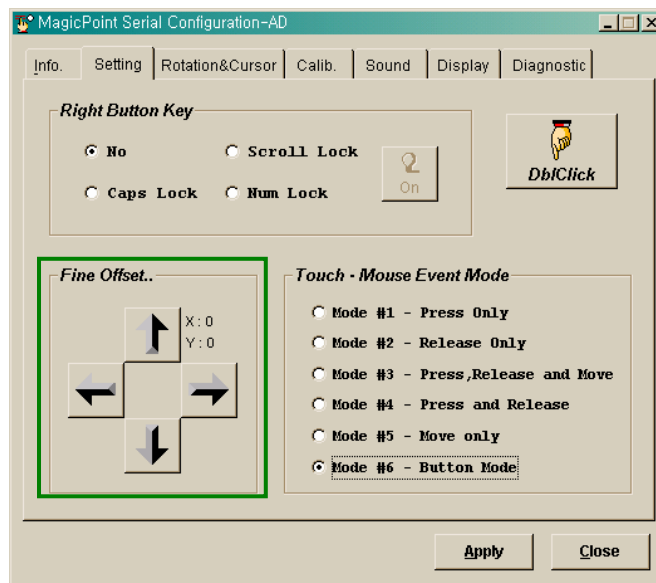
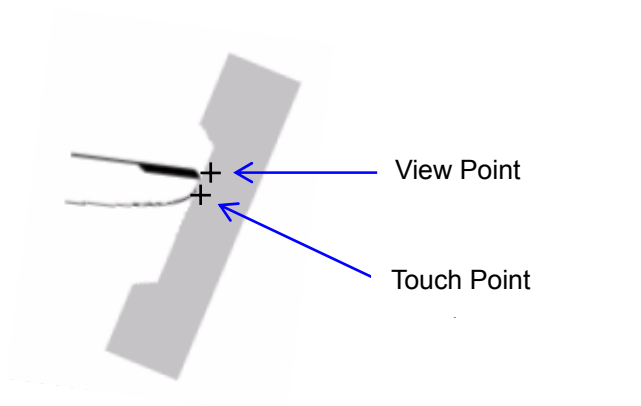
When you press the **[On]** button, you can make the right button active without any keyboard.

■ Right Button Key

No	Mouse Left Button
Scroll Lock	Make sure that right button function can be activated only when the [On] button is pressed.
Caps Lock	
Num Lock	

Fine Offset Setting

Generally, there is positional difference between View Point and Touch Point as bellow figure, so alignment of View Point and Touch Point by adjusting the position of Output Pointers makes customers feel comfortable to use Touch Screen.



The position of Output Pointer can be changed by adjusting X or Y coordinates to click [Up], [Down], [Left] or [Bottom] arrow icon.

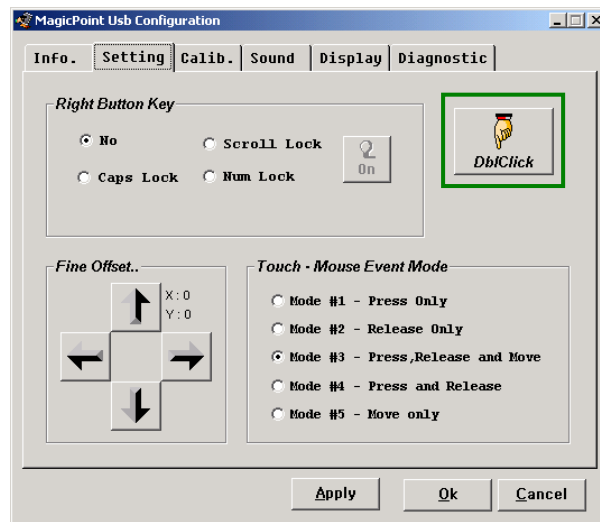


R.E.F.

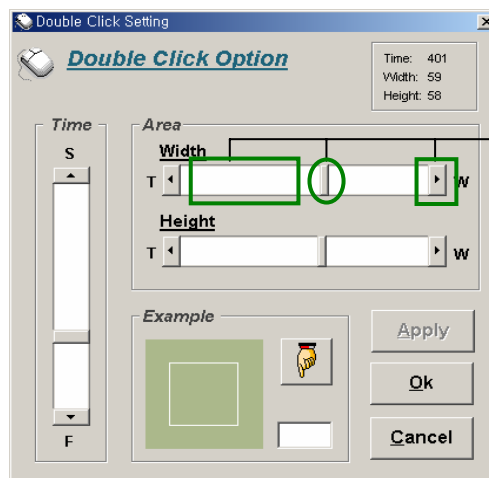
Adjusting Y coordinates to **0(dot)** is recommended for finger stylus, But adjusting coordinates is subject to angle of Touch Screen or type of stylus.

Double Click Setting

Click **[DbiClick]** to set time and area of double click in dialog box bellow.



After adjusting Time and Area by scroll button in dialog box bellow, click the **[Apply]** button to complete.
 (It's possible to check the real size of Area in Example box bellow.)



Effective Area of Double Click

■ Definition of Time and Area

1. **Time** is interval between first and second Press. (Unit: ms)
2. **Area** is difference of area between first and second Press. (Unit: dot)



Tip

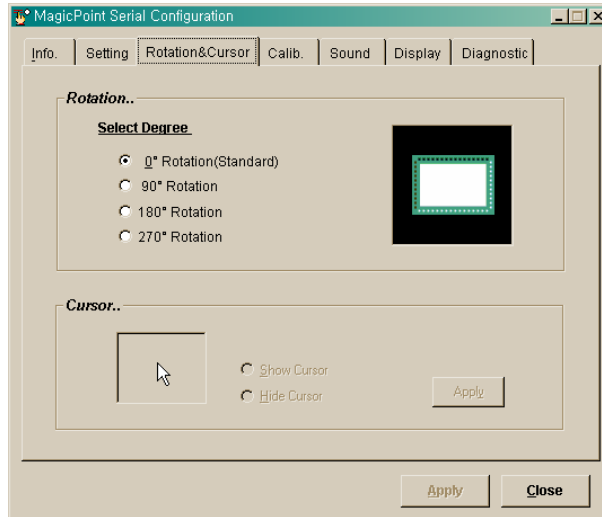
Too much enlargement of Time and Area can cause fault of Double Click function.

■ Test

Effective Area of Double Click can be tested by direct input action of Touch Screen into the white rectangle of Example box.
 (The white rectangle of Example box is just same size as the real effective Area of Double Click.)

Rotation Setting

Select one of the degree which you want to rotate in the **[Select Degree]** as shown below. You can see the rotated shape of touch screen in the preview of right window.

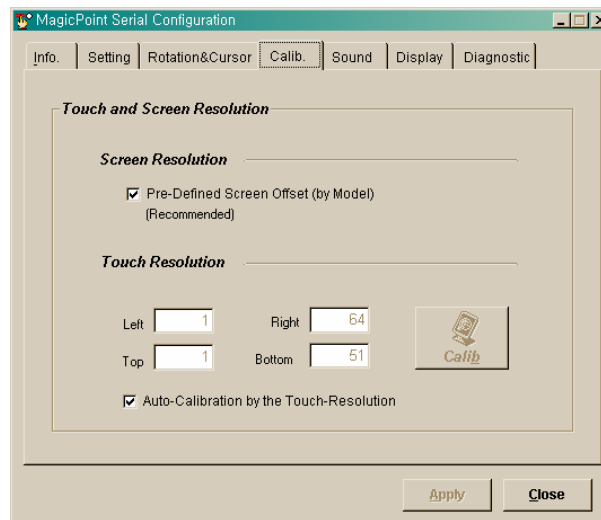


Tip

Make sure that you do calibration again after rotation setting, if you have done manual calibration. Manual Calibration has been done when the Auto-Calibration is not checked.

Calibration

Setting Screen Resolution and Touch Calibration is available in dialog box below.



■ The reason of Screen Resolution Setting

For the accuracy of Calibration, please select **Default Screen Offset(by Mode)** option to offset subtle difference between the valid area of Touch Unit and real Screen area.

■ Setting of Pre-defined Screen

Checked	screen resolution by touch model
Non-Checked	default screen resolution

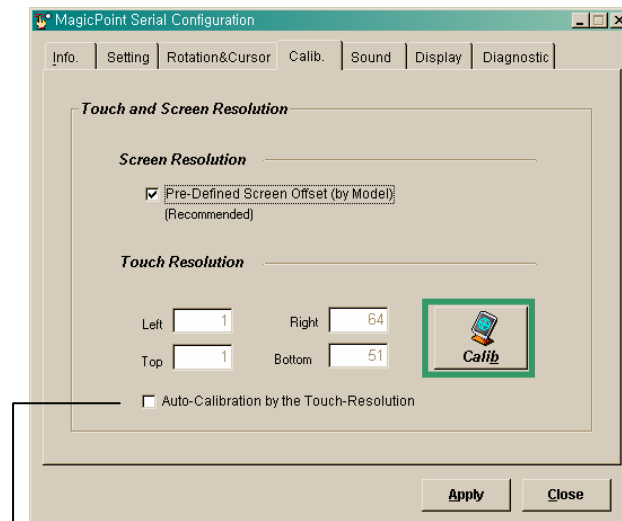
■ Definition of Touch Resolution

Left	Resolution starting number of sensor in horizontal axis
Right	Resolution finishing number of sensor in horizontal axis
Top	Resolution starting number of sensor in vertical axis
Bottom	Resolution finishing number of sensor in vertical axis

■ Please click **Default Calibration by the Touch-Resolution** option to execute default Calibration.

■ **Calibration (Manual Calibration)**

Please clear **Default Calibration by the Touch-Resolution** option and click the **[Calib]** button.



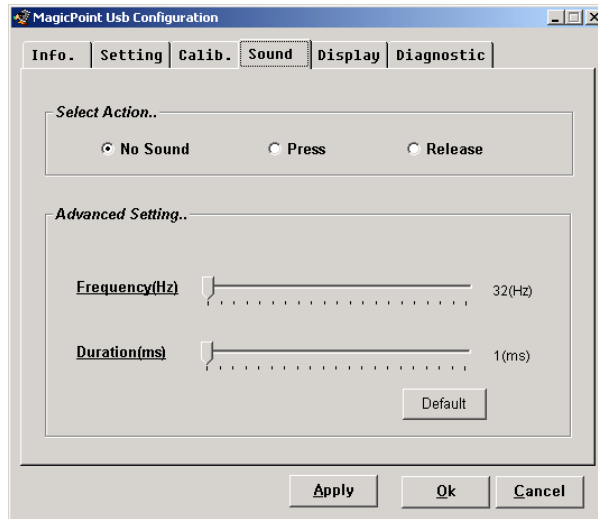
Clearing this option makes **[Calib]** button activated.

Calibration can be done to press and release Target Point marked on bellow screen by finger or pen four times repeatedly.



Sound Setting

Setting Sound Effect of touch action is available in dialog box below.



■ Selecting Sound option

No	No Sound
Press	Sound Effect only by pressing (on) Touch Screen
Release	Sound Effect only by releasing (off) Touch Screen

■ Selecting Sound Frequency option

Selecting favorite Frequency(HZ) and click the **[Apply]** button.

■ Selecting Sound Duration option

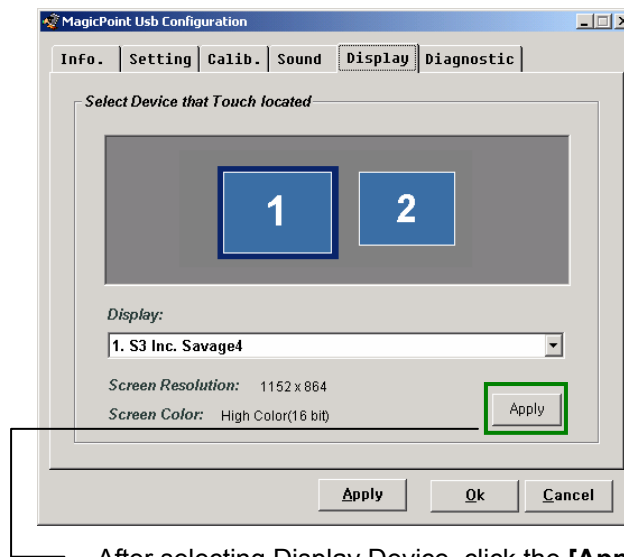
Selecting favorite Duration(ms) and click the **[Apply]** button.

- Default of Frequency and Duration are 356(Hz) and 50(ms) each.

Chapter 5. Selecting Display Device

■ Selecting Display Device

After Selecting Display Device coupled with Touch Screen from numbered rectangles or Display Adapter List, click the **[Apply]** button in dialog box below.



After selecting Display Device, click the **[Apply]** button.

<Example of Dual Monitor>

■ Display Information

Screen Resolution and **Color Depth** of Display Device that is selected by user are come into view in dialog box.



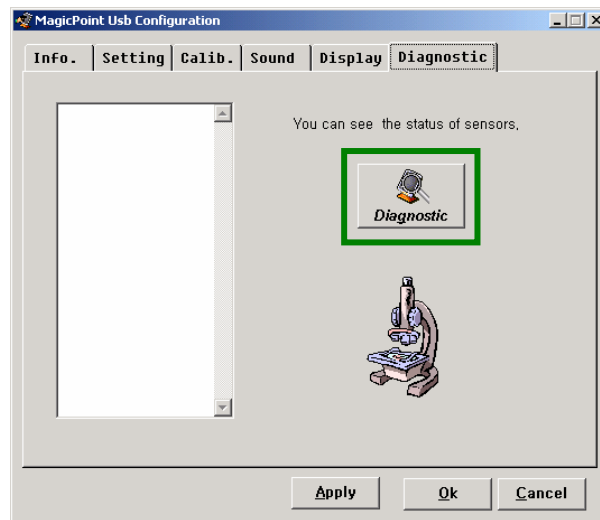
R.E.F.

Dual Monitor has two monitors in one PC and installing Touch Screen to each monitor makes them work just like two separate Touch monitors.

More detailed information is available by selecting **Desktop >> Display Information >> Registered Information >> Setting** option.

Chapter 6. Diagnosis of Sensors

By clicking [**Diagnostic**] button, status of sensors are described in dialog box bellow such as “**Sensors are OK**” or “**#n(Sensor Num) is Error**”.



R.E.F.

In case of a certain sensor’s error, MagicPoint Touch Screen works as normal status, though the touch area affected by error sensor is blocked.

When error sensor return to normal function, touch area blocked is automatically recovered to normal status without delay.

Appendix A) Frequently asked questions

Q1. When connecting USB cable of Touch Screen to USB port of Computer message of “cannot find driver File” appears.

Driver file already installed in your system may have been damaged, so please install again “Setup.exe” file in Install CD.

If dialog box of Maintenance Type appears, please select and execute [Repair] among [Modify] [Repair] [Remove] (Please refer to Chapter 2. Installation and Execution)

Q2. Message of “unknown device” appears in dialog box of Device Manager

Please install and execute “Setup.exe” file in Installation CD.

(Please refer to Chapter 2. Installation and Execution)

Q3. How to know MagicPoint 2.x installed properly to the computer?

Please select **Start >> Control Panel >> System >> Device Manager >> Mouse**, and confirm message of **“MagicPoint USB Touch Mouse -TM(P)”**.

Q4. Touch Screen Monitor doesn't appear in Information dialog box.

Please follow instructions below.

1. Please confirm Touch Screen Monitor power on.
2. Please confirm connection between computer and Touch Monitor.
3. After checking Question 3, please restart system.
4. In case of failure to recover, USB Cable or Touch Screen Monitor may be damaged.
Please send model number to our contact point noted on rear side of Touch Monitor.

Q5. Double Click is working abnormally.

Time and area of double click may be narrowly adjusted, so please adjust time and area of double click more widely.

(Please refer to Chapter 4. Configuration Setting >> Double Click Setting)

Q6. XY coordinates mis-alignment

In the case of manual Calibration, XY coordinates mis-alignment may happen.

Please select and execute Auto Calibration (Please refer to Chapter 4. Configuration Setting >> Calibration)

And it's available to adjust pointer's position in Fine Offset option.

(Please refer to Chapter 4. Configuration Setting >> Fine Offset Setting)

Q7. Un-installation is malfunctioned and system off.

Driver file already Installed in your system may be damaged, so please install "Setup.exe" in Installation CD selecting [Repair] Type option and try to uninstall again.

(Please refer to Chapter 2. Installation and Execution)

Q8. Should Restarting System be always done after finishing Installation?

Though USB itself has Plug and Play(PnP) function to identify and run devices and driver, **Restarting System** could be recommended to allows better operability.

In the case of changing version of MagicPoint in your system, **Restarting System** should be executed.

Q9. Should Restarting System be always done after finishing Un-installation?

Yes, **Restarting System** makes all the information about program owned by O/S completely clear.

Q10. Service Error dialog box appears after finishing Installation.

In the case of **Restarting System** undone after Un-installation, Installation may be troubled by conflict of inner programs.

Please restart system and install again.

Q11. Sound is not generated from Notebook.

Notebook without system speaker is not available for **Sound Effect**.