

AIT 42" Infra Red Touch PDP Display AIT-IRD42

Suitable for all brands of 42" Plasma and can be easily fitted as well."

- ❖AIT-IRD42 is the touch panel that copes with PDP panel.
- ❖Very compact design.
- ❖Convenient to fix.
- ❖The glass' thickness of AIT-IRD42 is 5mm.



40" MicroTouch™ DST Touch Screen (Dispersive Signal Technology)

Model NEC MultiSync LCD4010-BK

LCD Features:

- ❖1280 x 768 resolution enhances screen performance
- ❖No permanent phosphor image burn-in
- ❖See more with XtraView® wide-angle viewing



32" Capacitive CTII TFT Touch LCD

Model NEC LCD3210

LCD Features:

- ❖Rapid Response™ delivers uninterrupted video
- ❖Self-diagnostic capabilities detect possible failures
- ❖1366 x 768 ultra-high resolution



32" Capacitive CTII TFT Touch LCD

Model SAMSUNG LCD 320P

LCD Features:

- ❖Fast 8 ms (G to G) response time
- ❖Extra - wide H/V 170 degrees viewing
- ❖1366 x 768 resolution



21" Capacitive TFT Touch LCD

Model NEC LCD 2180UX

LCD Features:

- ❖Crystal-clear 1600 x 1200 native resolution
- ❖CableComp™ ensures sharp image reproduction
- ❖Ultra-thin-frame design creates more space



21" Capacitive TFT Touch LCD

Model SAMSUNG LCD Syncmaster™ 214T

LCD Features:

- ❖1600 x 1200 native resolution
- ❖Cultra fast ultra fast response time of 8 ms (G to G)
- ❖MagicColor Pro™, MagicTune™, MagicBright™, MagicRotation™



Your Partner in Touch Technology

20.1" Capacitive/Resistive TFT Touch LCD

Model **NEC** LCD 2080UX / 2070NX

LCD Features:

- ❖ XtraView® wide-angle viewing
- ❖ Native Resolution: 1600 x 1200
- ❖ Contrast Ratio (typical): 400:1



20.1" Capacitive/Resistive TFT Touch LCD

Model **SAMSUNG** LCD 204T

LCD Features:

- ❖ horizontal/vertical viewing angle of 178°/178°
- ❖ 700:1 contrast ratio
- ❖ MagicTune™ and MagicRotation™ technology



20.1" Capacitive/Resistive TFT Touch LCD

Model **LG** LCD 2010P

LCD Features:

- ❖ Fast 8 ms (G to G) response time
- ❖ DNLe - Digital Natural Image engine
- ❖ Extra - wide H/V 170 degrees viewing



15", 17" & 19" Capacitive/Resistive TFT Touch LCD

Model **NEC** LCD 52V / 72V / 92V

LCD Features:

- ❖ Rapid Response™ time
- ❖ NaViSet™ display-adjustment software
- ❖ Energy Star® 4.0 compliant



17" & 19" Capacitive/Resistive TFT Touch LCD

Model **LG** LCD 1750SQ / 1950SQ

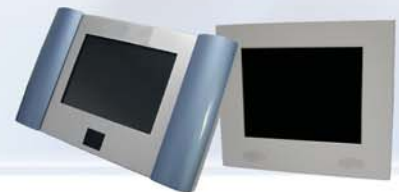
LCD Features:

- ❖ Narrow Bezel Design
- ❖ Lightview Function
- ❖ Certified TCO-03



Customised AIT LCD Touch Monitors

- ❖ Customized AIT LCD Touch Monitors are suitable for wall or rack mounted
- ❖ AIT Customised Touch Monitors are customized to customers unique requirements
- ❖ in term of color logo as well as mounting mechanism"



Contact Us

Advance Interactive Technologies Pte Ltd

73 Ayer Rajah Crescent #04-08/09,
Ayer Rajah Industrial Estate
Singapore 139952

Tel: +65 6778 9388 / 6778 6822
Fax: +65 6778 5177

Advance Interactive Technologies Sdn Bhd

32 Jalan Industri PBP 7
Taman Industri Pusat Bandar Puchong
47100 Puchong Selangor Malaysia

Tel : +603-5882 9588
Fax : +603-5882 9589